



Océ
TDS450

Love at first sight



Futureproof,
multifunctional wide
format system

- Productivity: maximises every minute
- Ease of use: saves your valuable time
- Care for your environment: you'll love working with it
- Smart investment: for love that's sure to last

Love at first sight

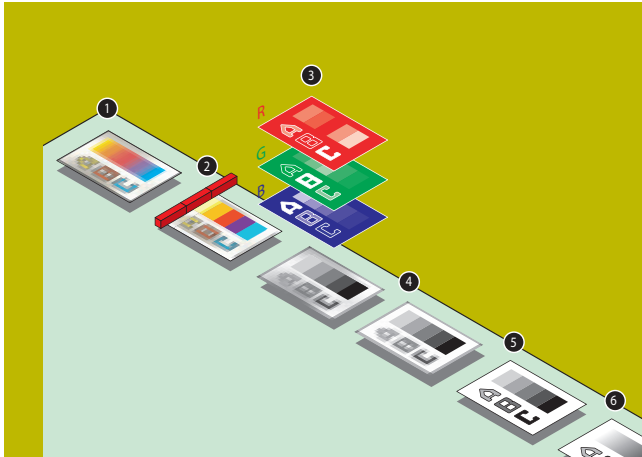


Océ TDS450

Futureproof, multifunctional wide format system

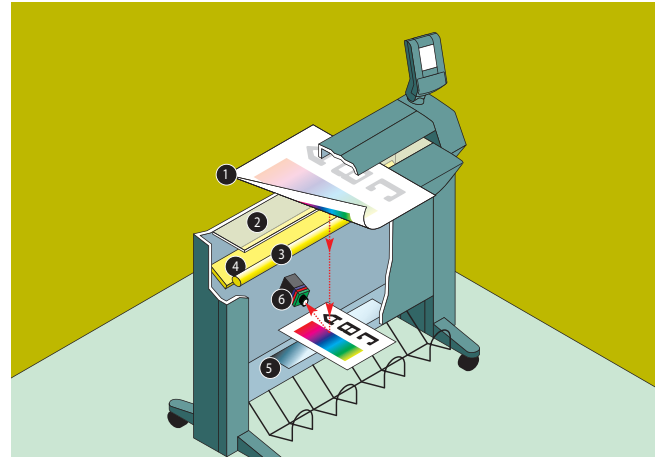


It's love at first sight. You're sure to fall for the productivity of the Océ TDS450. It starts in black & white with fast, convenient print, copy and scan to file. And it can grow even more in the future, with optional full-colour scan to file. That's why the Océ TDS450 is the efficient system for all your wide format documents. You'll love the way it handles your monochrome drawings today, and meets your colour needs tomorrow.



Océ Colour Image Logic

- 1 Original
- 2 Scanning
- 3 Colour module converts RGB data to greys, making sure that the lightest colours are visible (e.g. yellow)
- 4 Automatic Background Compensation removes unwanted background
- 5 Filtering sharpens text and lines
- 6 Halftoning ensures smooth gradients



Océ Direct Scan

- 1 Original
- 2 Glass plate keeps out dust
- 3 Lamp ensures consistently accurate colours over long periods of operation
- 4 Reflector redirects light beams, avoiding shadows
- 5 Single mirror eliminates risk of distortion
- 6 Single high-resolution camera ensures consistent colours and high sharpness



IT / Network Administration

'I want a system that's compatible with my environment and that evolves with it'



Productivity: maximises every minute

With the Océ TDS450 you can use your working time to the full-right up to the last minute. There's no complex operation. No trial and error. No delays. You'll have the prints and copies you need within moments.

Ease of use: saves your valuable time

Operation couldn't be simpler. Even occasional users won't waste valuable time finding the right settings. Printing, copying or scanning, the simple, fully customisable user interface takes you straight to the results you need.

Print and copy quality: right first time, every time

Optimum presentation, maximum legibility, retention of detail information. All vital for every drawing. With the Océ TDS450 and Océ Image Logic® technology, your results will be right first time, every time. Whatever the original.

Optimum throughput: organises your working relationship

Throughput means much more than just engine speed. For example the Océ TDS450's Compact Output Stacker neatly organises document delivery. And you can send scans directly to the desired destination from the scanner panel.

Management

'I want a system that keeps work flowing without interruptions'





High reliability: always there when you need it

The Océ TDS450's robust technology means it's available when you need it. Regular driver updates keep the system matched to your working environment so it's always ready to meet tough deadlines.

User comfort: it's easy to get along with

The Océ TDS450 has been designed with user comfort in mind. Outstanding ergonomics form the basis for consistent productivity. While remote system management allows virtually all functions to be accessed from users' workplaces.

Care for your environment: you'll love working with it

With today's lowest noise, heat and ozone emissions, the Océ TDS450 is ideal for departmental placement close to user workgroups. It ensures a comfortable working environment, meeting the main industry standards and regulations.

Smart investment: for love that's sure to last

Efficiently handling your wide format documents today is one thing. But what about your evolving future requirements? The Océ TDS450 supports your move to all-digital colour drawings with optional full colour scanning when you need it.



CAD

'I want a system that gives me prints without waiting, delivers them neatly and no matter how complex, ensures their integrity'

Océ TDS450 printer

Printing technology

Electrophotography (LED) with Organic Photoconductor drum

Resolution

600 dpi

Print optimisation

User specified print optimisation modes: Lines&text for excellent line accuracy; Standard for excellent lines plus smooth grays; Poster for excellent grays and smooth solid fills

Fusing technology

Océ Radiant Fusing, instant heating

Toner system

Clean closed toner system, refill while printing

Throughput

Speed

Constant 3 linear meters p/min or 2A0 p/min in all print modes

Warm-up time

None, instant behaviour

Paper path

Optimised, continuous printing speed when printing jobs from different rolls

Document delivery

- Standard: integrated tray, no extra footprint, delivery at the front
- Optional with 2 rolls version: integrated Compact Output Stacker for up to 100 prints neatly stacked with no extra footprint, delivery at the front

Media

Media sources

Choice of 1 or 2 rolls plus manual feed

Media capacity

Up to 175 meters per roll (75gr/m² paper) with automatic switch when roll empty

Media widths

Roll widths 297 mm – 914mm

Media types

Plain, transparent, recycled, fluorescent and coloured paper, films and vellums. Up to 110gr/m²

Media trimming

Closed system protects cutting device

Output sizes

From A3 to A0 and 36", up to 15 meters long

Environment

Dimensions

1352 mm (W) × 899 mm (D) × 1251 mm (H)

Weight

175 Kg (1 roll version), 185 Kg (2 roll version)

Mains supply

100/120/230 V, 50/60 Hz

Power consumption

EPA Energy Star® compliant, sleep mode 6 W, standby 28 W, operating 1340 W

Sound pressure

Sleep mode 0 dB(A), standby 24 dB(A), operating 54 dB(A) according to EN 7779 operator position

Océ TDS450 scanner

Scanning technology

Océ's patented Direct Scan colour technology, illuminating the original for accurate colours over long periods of time (innovative light source), eliminating risks of distortion (single mirror) and ensuring colour consistency and sharpness (single high resolution reduction type camera)

Resolution

575 dpi (optical), up to 600 dpi (interpolated)

Copy and scan modes

Lines & text, Greys & lines, Dark original,

B&W and Grey (standard)

Blueprint, Transparent and Photo

Colour (option)

Lines & Text, Map, Artwork and Photo

Scanner user interface

- Intuitive and multilingual
- 5 user defined templates for copying
- 5 user defined templates for scan-to-file

This means more complex jobs can be performed at the touch of a single button.

Camera

Single 3 colour linear CCD, 21360 pixels per colour line, 24 bits colour

Scanner panel

Can be positioned as needed

Throughput

Scan/copy speed (standard)

B&W 3 meters/min or 2 inch/sec

Greyscale & colour (option) 1 meter/min or 0.7 inch/sec constant in all scanning modes

Warm-up time

None, instant behaviour even for colour scanning

Output reception

Automatic rewinding or Integrated delivery tray, no extra footprint

Copying behaviour

No user intervention with automatic width detection and roll selection

Size recognition

Accurate digital automatic width detection, indication on scanner panel of the exact measured width.

Concurrency

Continuous feeding of copy jobs and scan jobs during printing of copy jobs and print jobs. Pre-programming of next job.

Original

Original feed

Face-down, right aligned. Automatic feed off/on

Original sizes

Image width: 200 – 914 mm, original width: 200–1016 mm, original length: 200 mm–15 m

Maximum thickness

Up to 3 mm

Imaging

Image processing

Océ's patented Image Logic® technology in 4 steps converting RGB data into 256 grey scales, removing unwanted background, sharpening text, enhancing weak information and ensuring smooth gradients.

Exposure control

Automatic, manual fine adjustment, background compensation on/off

Reproduction scale

Custom zoom 10–1000%, adjustable in 0.1% steps. Auto zoom to standard paper formats.

Scan X axis accuracy

0.1% ± 1 pixel

Scan Y axis accuracy for an A0

Below 0.3%

Image editing

Image shift, align, mirror, crop, delete area

Copy stamping (optional)

- Stamp content: free text, date and time
- Number: up to 50 user defined stamps
- Selection: from comprehensive list on scanner panel

Colour space (Scan-to-file option)

Accurate sRGB

Functions

Multi-copy mode:

1 – 999 copies

Input modes

Single sheet, Set collated or not

Set memory

Up to 999 copies from a set of up to 2,400 Ao originals

Output roll

Manual or automatic selection with user defined criteria

Output edges

Leading and trailing edge adjustments. Standard cut and synchro cut modes.

Environment

Dimensions

1300 mm (W) × 650 mm (D) × 1050 mm (H) / 1300 mm (H) incl. operator panel

Weight

70 Kg

Mains supply

100-230 V, 50-60 Hz

Power consumption

EPA Energy Star® compliant, sleep mode 5 W, standby 18 W, operating 105 W

Sound pressure

Sleep mode 0 dB(A), standby 23 dB(A), operating 50 dB(A) according to EN 7779 operator position

Océ Power Logic® controller

Platform Océ controller with Windows® XP embedded

Concurrency

- Print and scan simultaneously
- Print and copy simultaneously
- Scan and copy simultaneously
- Process next jobs during printing

Hard disk capacity

2 × 80 GB high speed hard disk dedicated to file spooling and set memory

- Up to 999 copies of set of up to 2,400 Ao
- Send once, process once, print many

File formats

HPGL, HPGL2, Calcomp 906/907/951 JPG, HPRTL, TIFF 6.0, CALS1, NIRS, C4, ASCII, optional Adobe® PostScript® 3™/PDF

Memory

512 Mb or 1024Mb

Interface

Ethernet 100/10 Mbits/s with RJ45

Network protocols

TCP/IP, NetBios (smb), Novell (IPX/SPX), SNMP, FTP, LPD
Other protocols supported through an external print server

Functions

- Multiple prints: up to 999
- Automatic file format sensing
- Automatic roll selection and switching
- Plot manipulation: auto positioning, rotation, auto scaling
- Pen management
- Auto rotate production mode for faster printing

Power consumption

Controller: 62.5 W

Flat screen monitor

Sleep mode 2 W, operating 16 W

Océ Remote applications

Local and remote user communication system

Océ Queue Manager

- View status of print and copy jobs
- View number of sets and number of pages per set for each job
- Manage print and copy jobs: hold, resume, delete, move to top
- Inbox for easy release at point of printing
- History queue for reprint of print jobs and copy jobs (number of copies can be modified)
- Four levels of user rights (password protected)

Océ System

View status of system components: printer, Control Panel scanner, controller, memory

Océ Settings Editor

Customise and optimise the workflow by editing and saving defaults settings.

Supported operating systems

Windows 95, 98, Me, 2000, NT4.0 SP3 and XP. On any other platform and operating system supporting Java 1.1.8 or higher

Océ Scan Logic®

Océ Scan Logic is an optional scan-to-file software suite for the Océ TDS450 multifunctional system

Applications

Océ Scan Manager, integrated scanning solution and Océ View Station LT for viewing at point of scanning

Scan destinations

- 10 programmable destinations directly selectable from scanner panel
- Scan to Web using FTP
- Scan to network directory
- Scan to controller

Scan technology

Océ Colour Image Logic intelligent image processing for B&W, Greys and full colour with up to 6 special original modes for "right first time" results

Resolution

Selectable from 72 up to 600 dpi

Data formats

TIFF (uncompressed, Packbits, G3, G4 and LZW), PDF (uncompressed, Flate, LZW, JPG and G4), CALS and JPG

Scan modes

Single scan, stream feed productive batch scanning with or without check plots

File naming

Automatically generates unique file names for each scan. Change file name at point of scanning.

User interface

5 User defined job templates enabling different scan jobs to be performed at the touch of a single button directly from the scanner panel

Viewing

View scans at point of scanning. Making use of a streaming technology particularly productive for viewing scanned documents in colour (no file size limitation)

Minimum requirements

Graphical user interface on Océ Power Logic controller

Options

Océ View station for editing and enhancement of scanned documents on remote PCs

Océ Batch Processor for automated editing and enhancement of batches of scanned documents on remote PCs

Océ High Speed Logic

Océ High Speed Logic is an optional enabling faster input speeds

Speed in B&W mode

Maximum 5 meters per min. at resolution up to 200 dpi

Speed in Greys

Maximum 4 meters per min at resolution up to and colour 150 dpi

Océ Colour Logic

Océ Colour Logic is an optional enabling, in combination with the Scan Logic option, to Scan-to-file in colour

Colour space

Accurate sRGB

Océ Account Center

Océ Account Center is an optional software application that enforces the users to enter valid accounting information before printing, copying and scanning to the Océ TDS450. Cost can then be allocated to the appropriate users, departments and projects.

Functions

- Printer and scanner lock out
- Customised accounting fields
- Alphanumeric account input
- Open to third party accounting software solutions

Océ Print Exec® Workgroup

Océ Print Exec Workgroup is a powerful, smart and efficient web-based optional software application for printing sets in workgroup environments

Functions

- Backchannel printer status information
- Stamping
- Set up different print configurations (i.e. store and select predefined print settings)
- Banner page
- Previewing
- Save and recall print jobs
- Reprint jobs

Drivers and job-submission software

Océ HDI driver

For AutoCAD (LT) 2000, 2000i, 2002, 2004, 2005 and 2006

Océ Windows driver

- Windows 2000, XP, Windows Server 2003, Windows Terminal Server, Citrix Metaframe
- Optimised for AutoCAD
- Microsoft signature

Océ Adobe PostScript® 3 drivers

Windows 2000, XP, Windows Server 2003 and Mac OS9 and OSX

Océ Print Exec® (standard) Basic

Web-based software application for easy printing of collated sets. Includes online viewing of printer status and queue

Copy delivery tray (optional)

Model

Wheeled delivery tray with blower unit

Capacity

Up to 150 sheets (media type dependent) from A3 to A0/E+

Power consumption

<40 W

Electrical requirements

120/230 V, 50/60 Hz

Dimensions

1,170 mm (W) × 1,440 mm (D) ×

1,090 mm (H) with tray fully extended

Weight

35.5 kg

Working environment

Safety approvals

TUV GS, CETECOM, CE, Complies with Directive 89/336/EEC and FCC rules and regulations, part 15 Class A, (c) UL Scanner partly complies with US federal section 508 (wheel chair users, color blind and those who cannot hear and/or speak)

Power consumption

EPA Energy Star compliant on printer, scanner and multifunctional configurations

Ozone emission

<0.001 ppm on average, 0.005 at peak production (see Safety Data Sheets for more details)

Sound pressure

Maximum 54 dB(A) operating

User languages

Switch on the spot between 2 preferred languages amongst 18 supported languages

Beyond the Ordinary



Printing for Professionals

Building a sustainable business has always been one of our core business principles. We do this by developing products and services that add value to the document processes of our customers, while minimizing environmental impact. And we conduct our business activities in a socially responsible manner aimed at preventing health, safety and environmental risks.

Océ Wide Format Printing Systems Partners and Awards



2006



2007



Novell



Océ helps the people who make our world. Companies everywhere use Océ technical documentation systems in manufacturing, architecture, engineering and construction. Each week, high speed Océ printing systems produce millions of transaction documents such as bank statements and utility bills. And in offices around the world, people use Océ professional document systems to keep the wheels of business and government turning. Océ is also at work in publishing on demand, newspaper production, document management outsourcing and wide format colour for spectacular display graphics. It all helps our professional customers go 'Beyond the Ordinary' in printing and document management.

© 2007 Océ. Illustrations and specifications do not necessarily apply to products and services offered in each local market. Technical specifications are subject to change without prior notice. All other trademarks are the property of their respective owners.

For information and services, visit us at:

www.océ.com